

**PUBLIC WORKS & ENVIRONMENTAL COMMITTEE MEETING**

**Tuesday, May 2, 2023, 10:00 a.m.**

Town Hall or via Zoom

DIAL: +1 646 558 8656 US & INCLUDE THE MEETING ID: 456-920-3798 & PRESS #.

JOIN ONLINE AT: <https://us02web.zoom.us/j/4569203798>.

**Committee responsibilities:** Buildings/Grounds/Maintenance, Town Park, Recreation, Parking Lots, Infrastructure, Streets & Street Lighting, Storm/Sanitary Sewer, Recycling Operations, Safety Program, Compost Site and Bloomsburg Municipal Airport.

**Committee Members:** James Garman (Chair), James Huber and Nick McGaw.

**Citizens to be heard:**

Town Park Improvement Association- Summer Concert Series.

**Business:**

1. Project Selection 2023 CDBG annual action plan- Jamie Shrawder.

|                              |                    |
|------------------------------|--------------------|
| SEDA-COG Administration:     | \$34,544.00        |
| East Pine Street Parking Lot | \$71,091.67        |
| Pine Street Parking Lot      | \$71,091.67        |
| West Pine Street Parking Lot | <u>\$71,091.66</u> |
| Total                        | \$247,819.00       |
2. Approval to pay back funds on the Miller Avenue project.
3. Approval to direct SEDA-COG to prepare a Substantial Amendment for the 2018 CDBG Funds.
4. Approval of the Public Works & Environmental Committee minutes from the 4/4/2023 meeting.
5. Approval of a high school internship at the airport- Nadia Camblin.
6. Discussion of having Columbia Child Development Program have an agreement with the Bloomsburg Municipal Airport as an evacuation site in the event of an emergency.
7. Discussion of the parking lot across from the airport.
  - a. Delta Airport Consultants and LIVIC Civil.
  - b. Several documents have been sent with the agenda for this item.
8. Discussion of adding 6<sup>th</sup> Street on the 2023 paving schedule- Andrew Barton, Town engineer.
9. Discussion of having Heller's Gas and Veolia explore costs to have lines run from current line to the Hock Hangar with EAA being responsible for payment of current and future costs. Note: all code permitting will be on EAA to submit/ pay.
10. Discussion of implementing a traffic signal maintenance plan.
11. Review of a quote for a dog park divider fence in the amount of \$5,470.

12. Review of a quote for reseeding the dog park in the amount of \$2,580.
13. Review of dates to hold an airport workshop for future budget/ planning of the airport with Delta Airport Consultants via Zoom. Note: all of Council will be invited.  
May 11, 12, 15 and 18 either at 10 a.m. or 1 p.m. via Zoom.
14. Review of the reports (will be presented at the meeting).
  - Recycling.
  - Compost.
  - Airport.

**Next meeting: June 6, 2023.**

# Bloomsburg Town Park 2023 Concert Series

- |  |   |
|--|---|
| <b>Wednesday, June 7</b><br>7:00 p.m. – 8:30 p.m.  | <b>The Danville Community Band</b><br>A concert band playing a variety of music.  |
| <b>Wednesday, June 14</b><br>7:00 p.m. – 8:30 p.m. | <b>The Shoreliners</b><br>Playing a variety for all tastes.   |
| <b>Wednesday, June 21</b><br>7:00 p.m. – 8:30 p.m. | <b>McNett Country</b><br>Traditional and Contemporary Country Music   |
| <b>Wednesday, June 28</b><br>7:00 p.m. – 8:30 p.m. | <b>Memory Lane</b><br>Music of the 50's, 60's, and 70's   |
| <b>Wednesday, July 5</b><br>7:00 p.m. – 8:30 p.m.  | <b>Ostrich Hat</b><br>We flow like a DJ and ROCK like a band!   |
| <b>Wednesday, July 12</b><br>7:00 p.m. – 8:30 p.m. | <b>Strawbridge</b><br>Classic Rock/Modern Country   |
| <b>Wednesday, July 19</b><br>7:00 p.m. – 8:30 p.m. | <b>The Clickard Consortium</b><br>A 10-piece ensemble playing swing to modern jazz.   |
| <b>Wednesday, July 26</b><br>7:00 p.m. – 8:30 p.m. | <b>Gift, Troutman and Gift</b><br>With vocal harmonies from the 40's to the present   |
| <b>Thursday, August 3</b><br>5:00 p.m. – 'til dusk | <b>68<sup>th</sup> Annual Cake and Ice Cream Festival</b><br>Featuring the <b>Catawissa Military Band</b> . Come and enjoy this traditional community event with food, games, music, and fun for all! |

**Come – Enjoy These Summer Concerts**

**CHILD CARE**

215 E. Fifth Street • Bloomsburg, PA 17815

Phone: 570.784.8618 • Fax: 570.389.8121

[admin@ccdppa.org](mailto:admin@ccdppa.org)



Columbia Child Development Program

**HEAD START**

589 E. 7<sup>th</sup> Street Suite 1 • Bloomsburg, PA 17815

Phone: 570.784.1076 • Fax: 570.784.3571

[headstart@ccdppa.org](mailto:headstart@ccdppa.org)

6

[www.columbiachilddevelopment.org](http://www.columbiachilddevelopment.org)

---

*EDUCATING AND SUPPORTING FAMILIES THROUGH THE EARLY YEARS*

Attn: Airport Coordinator

301 Airport Rd

Bloomsburg, PA 17815

(570) 317-1966

Columbia Child Development Program- Head Start would like to enter into an agreement with the Bloomsburg Municipal Airport to utilize space located at 301 Airport Road, Bloomsburg Pa 17815 as an evacuation site in the event of an emergency.

The purpose of this agreement would allow Head Start to relocate two classrooms from the Town Park Village Head Start Center, at 1310 Ferry Road, Bloomsburg Pa 17815, to the Airport location. The children and staff would proceed up the sidewalk towards Susquehanna River crossing the road prior to the bridge, allowing all individuals to enter onto Airport property. Children and staff would continue to the evacuation site at the Airport Office Conference room by way of stairs or ramp.

An approximate count of individuals includes 17 children per classroom (34 total children), 3 staff per classroom and a family service working (7 total staff).

Columbia Child Development Program would not plan to utilize the Airport in the event of flooding as the airport and the Head Start center are both located in the flood zone. The Head Start program would enact other safety plans and protocol in the event of flooding.

---

The official registration and financial information of Columbia Child Development Program may be obtained from the Pennsylvania Department of State by calling toll-free, within Pennsylvania, 1-800-732-0999.

Hearing impaired dial 711. Registration does not imply endorsement.

"This institution is an equal opportunity provider."



For additional information related to Supports, see the following references:

- ✓ Traffic Signal Portal – Manufacture Structure Drawings
- ✓ Publication 46 (Chapter 4)
- ✓ Publication 148 (TC-8801, TC-8803)
- ✓ Publication 149 (Chapters 5, 12 & 20)
- ✓ Publication 408 (Section 951)
- ✓ Form TE-974



The preventative maintenance activities/scheduling intervals for traffic signal supports (including mast arms, strain poles, pedestal poles, and pedestrian stub poles) are summarized in **Exhibit 5-1**.

**Exhibit 5-1 Preventative Maintenance - Supports**

| Traffic Signal Supports (Mast Arms, Strain Poles, Pedestal Poles, Pedestrian Stub Poles)   | Maintenance Intervals |           |             |
|--|-----------------------|-----------|-------------|
|  | 6 Months              | 12 Months | As Required |
| <b>General</b>   |                       |           |             |
| Check paint condition and/or corrosion   |                       | X         |             |
| Paint repairs as needed  |                       |           | X           |
| Check for obstructions in drain at pole base (clear drainage holes in pole bases if present)   |                       | X         |             |
| Inspect foundations for damage   |                       | X         |             |
| Inspect the foundation and base plate connection   |                       | X         |             |
| Verify that leveling nuts are in a snug-tight condition with the bottom of the base plate. Snug-tight is defined as the full force of a person on a 12-inch wrench   |                       | X         |             |
| Verify that a washer is present under each top nut to provide full bearing and to seal bolt hole gaps  |                       | X         |             |
| Visually verify that the top nuts are tight and free of corrosion  |                       | X         |             |
| Check condition of grout or rodent screen at pole bases; replace the grout or rodent screen if it has been removed   |                       | X         |             |
| Remove the grout or rodent screening under the base plate if there is evidence of anchor bolt weathering. Remove any debris, and examine the anchor bolts under the base plate, for signs of bending, cracking, etc. |                       | X         |             |
| Adequately secure handhole covers (replace any missing covers)   | X                     |           |             |
| Inspect poles, transformer bases, and arms for damage caused by vehicle impacts, weather, or wear and tear (note any deficiencies)   |                       | X         |             |
| Check pole for plumbness; shim or adjust as necessary  |                       | X         |             |
| Check for rust and tightness of mounting hardware  |                       | X         |             |
| Check for missing pole caps and mast arm end caps; replace as required   |                       | X         |             |
| Check signal cable for wear at entrance of poles, brackets, signal heads and where it's lashed to the span wire. Install or replace rubber grommets as required.   | X                     |           |             |
| Check for wires/cables that may rub, or touch mast arm supports  | X                     |           |             |
| Check Guy Wires (inspect guy anchors for proper attachment and/or damage)  | X                     |           |             |
| Check galvanized nuts, bolts, and washers for any significant signs of corrosion   |                       | X         |             |
| Inspect for rust and cracks especially at seams, joints, and base plate  |                       | X         |             |
| Inspect 100 percent of all welds for visual evidence of cracking   |                       | X         |             |
| Document any evidence of weld metal or base metal cracking   | X                     |           |             |
| Document any adverse bolted connection findings  | X                     |           |             |
| Verify luminaire(s) are operational during dusk to dawn time periods   |                       | X         |             |
| <b>Mast Arm Supports</b>   |                       |           |             |
| Inspect horizontal and vertical angles of arms and poles (check pole and/or arms for warping or other damage; note deficiencies)   |                       | X         |             |
| Visually inspect connections. The connection should be tight with no visible gap between the connection or flange plates, bolts, nuts, or washers.   |                       | X         |             |
| Verify that a washer is used between the connection or flange plate and each nut   |                       | X         |             |

| Traffic Signal Supports (Mast Arms, Strain Poles, Pedestal Poles, Pedestrian Stub Poles)   | Maintenance Intervals |           |             |
|--|-----------------------|-----------|-------------|
|  | 6 Months              | 12 Months | As Required |
| Visually inspect arm to column connections. The connection should be tight with no visible gap between the connection or flange plates, bolts, nuts, or washers.   |                       | X         |             |
| Check for cracks in the vertical column to base plate connection; any cracks generally initiate opposite the arm to shaft connection (about 180° from the centerline of the arm for single-arm structures)   |                       | X         |             |
| Check for cracks in the welded connection between the arm or column connection plates; any cracks generally initiate at the uppermost (12 o'clock) or lowermost (6 o'clock) positions of the connections due to the dead load and oscillation (galloping) caused by wind loads |                       | X         |             |
| Strain Pole Supports   |                       |           |             |
| Check for cracks in the shaft or column to base plate connection; any cracks generally initiate opposite the span wire connections   |                       | X         |             |
| Check condition of strain vises, if applicable   |                       | X         |             |
| Check bonding of span wire and tether wire to strain pole  |                       | X         |             |
| Visually inspect each tether wire for excess sag; adjust as necessary  |                       | X         |             |
| Inspect all connecting span wire hardware (anchors, guards, cable lashing, supporting brackets); tight or replace as necessary   |                       | X         |             |

## 5.2 Controller Assembly

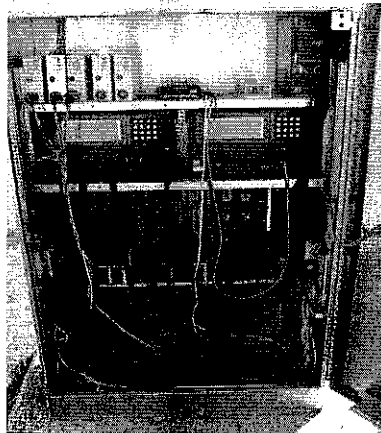
The controller assembly is the cabinet and all of the complete electrical and electronic components mounted inside the cabinet for controlling signal operation.

- ✓ Cabinet
- ✓ Controller Unit
- ✓ Conflict Monitor
- ✓ Flasher Units
- ✓ Load Switches and other

The controller unit is the heart of the controller assembly which selects and times signal displays.

Several types of traffic signal controller units are used in Pennsylvania:

- ✓ **NEMA TS1**  
Use function-based standards that allow for interchangeability between manufacturers.
- ✓ **NEMA TS2**
  - Type 1 units allow for high-speed communication between equipment and for future expandability
  - Type 2 units retain the TS1 type connectors allowing for a degree of downward capability
- ✓ **Type 170**  
Older hardware-based controllers that were most often used in the City of Pittsburgh and Philadelphia. While no new installations are permitted by current specifications, many existing installations exist and must be maintained.
- ✓ **Type 2070**  
Advanced type of controller, modular in design, and use an open architecture allowing compatibility with off-the-shelf products. They allow for communications and are configurable for





**Valley Seeding Company, Inc.**  
 306 West County Road, Sugarloaf, PA 18249

PENNDOT BP# V001  
 WBENC WBE #2005125332  
 NAICS Code 561730  
**Bid Date:** 21-Apr-23

**County:** Columbia  
**Project:** Dog Park

| Item Number | Qty | Unit | Description                | Unit Price | Total      |
|-------------|-----|------|----------------------------|------------|------------|
|             | 1   | LS   | Seed, Soil Suppl., & Mulch | \$2,580.00 | \$2,580.00 |
|             |     |      |                            |            |            |
|             |     |      |                            |            |            |
|             |     |      |                            |            |            |
|             |     |      |                            |            |            |
|             |     |      |                            |            |            |
|             |     |      |                            |            |            |
|             |     |      |                            |            |            |
|             |     |      |                            |            |            |
|             |     |      |                            |            |            |
|             |     |      |                            |            |            |
|             |     |      |                            |            |            |
|             |     |      |                            |            |            |
|             |     |      |                            |            |            |
|             |     |      |                            |            |            |
|             |     |      |                            |            |            |
|             |     |      |                            |            |            |
|             |     |      |                            |            |            |
|             |     |      |                            |            |            |
|             |     |      |                            |            |            |
|             |     |      |                            |            |            |
|             |     |      |                            |            |            |
|             |     |      |                            |            |            |
|             |     |      |                            |            |            |
|             |     |      |                            |            |            |
|             |     |      |                            |            |            |
|             |     |      |                            |            |            |
|             |     |      |                            |            |            |
|             |     |      |                            |            |            |
|             |     |      |                            |            |            |
|             |     |      |                            | TOTAL      | \$2,580.00 |

Notes: Prices **DO NOT** allow for retainage  
 Silt Fence / Silt Sock items **DO NOT** include removal  
 Prices DO NOT include any M & P of Traffic

Mary Lou Burke  
 President